

Alfa Brera







Alfa Brera

The realisation of a dream

'I designed the Brera because Alfa Romeo will never go out of fashion', stated Giorgetto Giugiaro, the car designer who dreamed up the model: a stylish, compact car with mastery of the road and a strong personality. 'When we premièred the concept car in Geneva I referred to it as a 'very sexy' Alfa Romeo sports model, I didn't know it would ever go beyond the prototype stage: all I knew was that the concept could definitely go into production with only a few minor changes.

Today, that prototype has become a production car. A car that can stir people's emotions and offers the ultimate driving experience, a champion of refined styling and cutting-edge technology, that can combine uncompromising performance with the comfort usually only associated with a luxury saloon.

Alfa Brera Art and technology





Alfa Brera Art and technology

The exterior styling of the Alfa Brera is full of classical references, an ideal opportunity for a modern interpretation of traditional Alfa Romeo styling cues.

A quick glance tells you everything. The rear window, for example, is reminiscent of that from the historical Giulietta Sprint, whilst the rear of the car continues the distinctive traits of the latest models.

The Alfa Brera marks continuity with the past but offers advanced technology and a refined interior. In a car of this character, which has been bred to offer outstanding performance coupled with a design of great visual impact, the interior has been specifically designed around the driver's 'cockpit'.









Alfa Brera Unmistakeable design

Unique, inimitable styling combining the creativity of Giugiaro with the unmistakable traditional flair of Alfa Romeo. The tapered front features two swages sweeping from the grille back along the bonnet to the windscreen pillars. The balance of form and overall style, soft and sleek, gives the model an impression of compactness that belies its dimensions: 441 cm long, 183 cm wide, with a wheelbase of 252 cm, measurements that leave room for a welcoming passenger cabin. The sensation of equanimity is accentuated by light from the fixed glass roof, a design feature that gives the car a contemporary look. The car also boasts a large luggage compartment, with a volume of 300 litres, which can be increased to 610 by folding down the rear seats.

Alfa Brera A sporting thoroughbred

The Alfa Brera is a thoroughbred sports car which, thanks to the high wishbone and multilink suspension systems, guarantees excellent dynamic performance without compromising anything in the way of stability, safety or comfort. The Q4 four-wheel drive system (standard with the 3.2 JTS V6 versions) demonstrates the advanced engineering which has been brought to bear to optimise the driving experience.





Alfa Brera Power and technology

Two new innovative petrol engines have been designed including the latest technology with JTS direct injection and 'Twin Phaser' continuous variable valve timing for controlling the intake and exhaust valves. Powerful, responsive & elastic engines, with lots of torque even at low speeds, ensure tremendous pick up without having to change gear. With 260 bhp, the new 3.2 JTS V6 is the most powerful engine in the Alfa Romeo range and, for the first time in an engine with this architecture, it adopts the exclusive Twin Phaser system of varying the opening angle of the valves.

No less refined, the 2.2 JTS has four cylinders, twin camshafts and 16 valves with variable valve timing. It delivers 185 bhp and is notable for its lightness, obtained by using an engine block and cylinder head in aluminium alloy. Two counter-rotating shafts reduce vibrations, ensuring the smooth running more typical of a six-cylinder engine.

The 5 cylinder 2.4 JTDM diesel engine is at the cutting edge of engine design, with control units that continually adjust the amount of fuel that's delivered into each cylinder, along with the number of injections, too. Not only does this enhance its power and torque, it lessens the fuel consumption, and makes it quieter and smoother, as well.

Matched to each engine is a 6-speed manual gearbox which helps to deliver exceptional performance. An optional Qtronic 6-speed automatic transmission is also available on the 3.2 JTS V6 engine. This advanced transmission evaluates your driving style and selects an optimal gear accordingly. The Qtronic system also provides the ability to switch to manual control for heightened driver involvement, which, can be furthered by the choice of optional gear shift paddles.

		2.2 JTS	3.2 JTS V6 Q4	2.4 JTDM
CHARACTERISTICS	No. of cylinders, arrangement	4 in line	60 degree V6	5 in line
	Bore x stroke (mm)	86 x 94.6	89 x 85.6	82 x 90.4
	Displacement (cc)	2198	3195	2387
	Compression ratio	11.3 : 1	11.25 : 1	17 : 1
	Max. power output: bhp (kW-EC) at rpm	185 (136) 6500	260 (191) 6300	200 (147) 4000
PERFORMANCE	Peak torque: Nm (kgm-EC) at rpm	230 (23.4) 4500	322 (32.8) 4500	400 (40.8) 2000
	Top speed mph (km/h)	138 (222)	149 (240)	142 (228)
	Acceleration (driver + 30 kg): 0 to 62 mph (s)	8.6	6.8	8.1
	0 to 1000 m (s)	29.5	27	28.7
FUEL CONSUMPTION - EMISSIONS				
According to 1999/100/EC Directive	urban cycle mpg (l/100km)	21.7 (13)	16.7 (16.9)	30.7 (9.2)
	extra urban cycle mpg (l/100km)	38.7 (7.3)	33.6 (8.4)	52.3 (5.4)
	combined cycle mpg (l/100km)	30.1 (9.4)	24.6 (11.5)	41.5 (6.8)
	Exhaust emissions - CO ₂ (g/km)	221	273	179





Alfa Brera Unsurpassed agility

Alfa Romeo has always been associated with performance and road-holding. With an uncompromising design, the Alfa Brera adopts a finely tuned suspension setup that comprises high wishbones at the front (derived from the world of motorsport) and a multilink system at the rear. The incredibly precise steering is the most direct in its class, with barely two and a quarter turns of the steering wheel from lock to lock it ensures a remarkably fast response. The braking system uses four discs (all self-ventilating on the 3.2 JTS V6 & 2.4 JTDm) with ABS and electronic brake force distribution. For optimum safety, the car boasts the most advanced electronic traction and stability control systems available, such as VDC (Vehicle Dynamic Control). The 3.2 JTS V6 versions have Q4 permanent four-wheel drive as standard, a highly evolved transmission that makes a substantial contribution to the quality of the car's dynamic behaviour. The heart of the system is the mechanical central differential (an evolution of the Torsen C), which distributes the engine torque between the front and rear wheels depending on road conditions. In normal driving conditions, the Q4 four-wheel drive system has a rearward bias (with 57% of available torque), a decision designed to satisfy the most passionate drivers.



Bold innovation, remarkable stability and outstanding integrity produce effortless performance and satisfaction.

		2.2 JTS	3.2 JTS V6 Q4	2.4 JTDm
TRANSMISSION	Drive	Front	Four wheel drive	Front
	Gearbox	6 + reverse	6 + reverse	6 + reverse
	Final ratio	4,176 : 1	3,895 : 1	3,545 : 1
STEERING	System	Rack and pinion with power steering	Rack and pinion with power steering	Rack and pinion with power steering
	Turning circle (m)	10.7	10.7	10.7
SUSPENSION	Front	Independent wheel set-up with double wishbones and stabiliser bar anchored via ball joints	Independent wheel set-up with double wishbones and stabiliser bar anchored via ball joints	Independent wheel set-up with double wishbones and stabiliser bar anchored via ball joints
	Rear	Independent wheel set-up with Multilink architecture	Independent wheel set-up with Multilink architecture	Independent wheel set-up with Multilink architecture
BRAKES - (DISCS)	Front	Ventilated 305 x 28, 60mm floating calliper	Ventilated 330 x 28, fixed aluminium calliper with four 42mm pistons	Ventilated 330 x 28, fixed aluminium calliper with four 42mm pistons
	Rear	Solid 278 x 12, combined 38mm floating calliper	Ventilated 292 x 22, combined 42mm floating calliper	Ventilated 292 x 22, combined 42mm floating calliper



Alfa Brera Cossetting environment

The Alfa Brera offers a comfortable, reassuring environment for both driver and passengers alike, thanks to the use of cutting edge technology, careful choice of materials and the overall attention to detail. It's obvious from the moment you get in that the cabin has been designed to welcome and interact with passengers. The dashboard and instruments are both focused towards the driver in the classic Alfa Romeo style and the automatic climate control system, stereo CD player, and starter button are all conveniently located on the central console. Practicality, comfort and engineering excellence combine to offer the ultimate in driving pleasure that you would expect from a coupé designed by Alfa Romeo.

Alfa Brera Superlative comfort

Comfort and Italian style begins with the incredibly supportive wraparound seats with built-in head restraints. There's also the dual zone automatic climate control system which ensures the perfect climate and comfort of passengers in all situations. And there's more: an optional sophisticated info-telematic system that brings together a satellite navigation system, CD auto-changer, GSM dual band hands-free telephone, voice commands and CONNECT™ info-mobility services. Not to mention the optional Bose® Sound System, offering exceptional music reproduction.

Furthermore thanks to Blue&Me™, a high-tech hands-free system with voice recognition based on the Windows Mobile® platform, you can use your Bluetooth® compatible mobile phone and listen to your favourite music recorded on a MP3 player or any other mass storage device with a USB connection through the powerful stereo system. This is made possible by a USB port in the glove compartment that allows you to connect your device and select your music via the remote audio controls on the steering wheel.





Alfa Brera Advanced Safety

The Alfa Brera adopts the most sophisticated electronic active safety devices. As well as 4-channel ABS with EBD and Brake Assist, it also has VDC for stability control, ASR, to prevent the wheels from spinning, MSR, which intervenes in the event of abrupt gear shifts in poor road conditions and Hill Holder, making hill starts easier.

To protect passengers, the Alfa Brera has a bodyshell designed to absorb collisions with maximum effectiveness, together with seven airbags as standard: dual-stage front airbags, side and window airbags which also protect the rear seats and lastly, a newly designed driver's knee airbag.

Over ninety years of Alfa Romeo technology culminate in safety credentials of the highest standards.





Alfa Brera





The background of the advertisement is a blurred, artistic photograph of a car, likely an Alfa Romeo Brera, in motion. The image is split vertically: the left half is a bright, overexposed white, while the right half shows the car's body in shades of blue and grey, with light trails suggesting speed. The text is centered over the white portion.

Alfa Brera

A true Italian sports car



Personalisation

The Alfa Brera is available with a choice of three engines, 10 body colours and three interiors, allowing numerous combinations to be created capable of satisfying the most discerning of personal tastes. The following equipment is standard on all cars: dual zone automatic climate control, Alfatex upholstery, seven airbags, stereo radio CD player, panoramic glass roof with electric blind, cruise control, rear parking sensor, starter button on the dashboard, VDC, 17" alloy wheels, electrically adjustable wing mirrors that fold for parking and aluminium trim. The 3.2 JTS V6 Q4 versions then add to this already rich list of equipment: leather upholstery. A coupe has never offered so much.

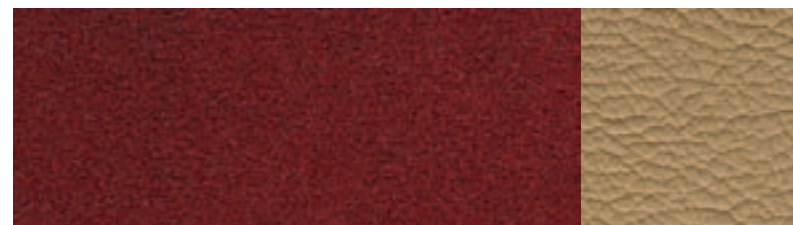
Alfa Brera Alfatex®



145
Black/Grey



147
Blue/Tobacco



171
Red/Beige

Alfa Brera Leather



402
Black/Grey



403
Blue/Tobacco

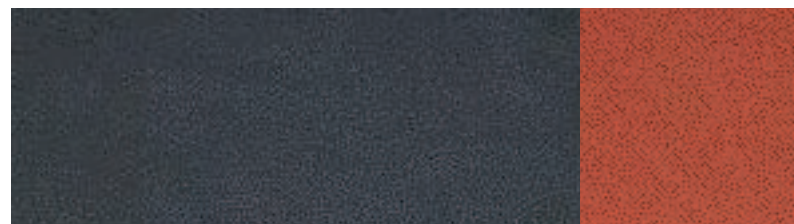


401
Red

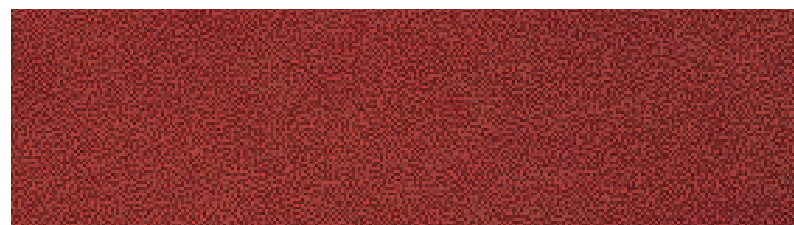
Alfa Brera Frau® Pieno Fiore Leather



908
Black



909
Blue/Tobacco



901
Red

Alfa Brera Dashboard

Black/Grey



Blue/Tobacco



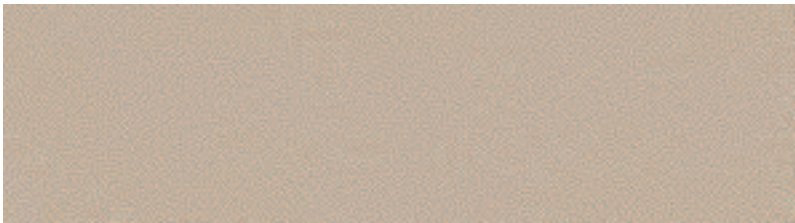
Red/Beige



Alfa Brera Body colours



203
Montecarlo Blue
Metallic



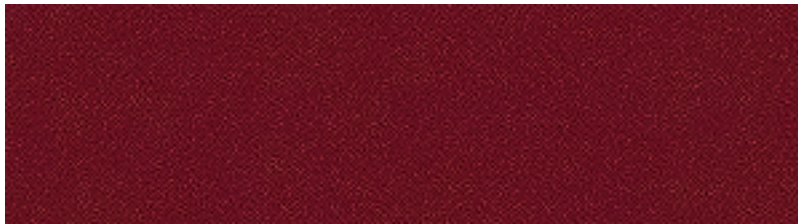
588
Gold
Metallic



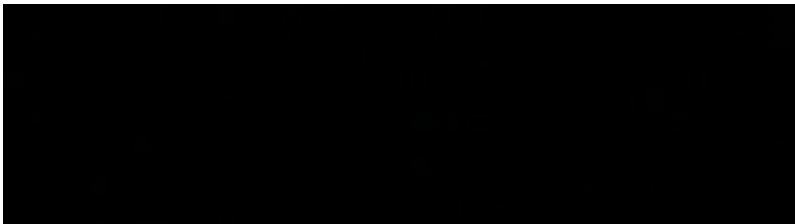
565
Alfa Silver
Metallic



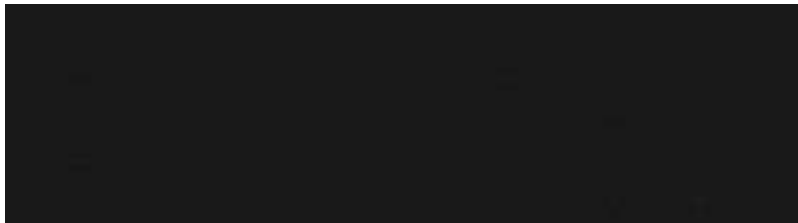
696
Diamante Grey
Metallic



583
Rubino Red
Metallic



876
Carbonio Black
Metallic



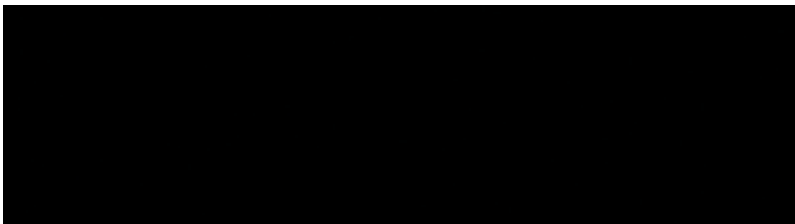
585
Touring Grey
Metallic



289
Alfa Red
Special

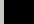




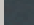

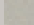
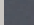



586
Misano Blue
Metallic



601
Black
Solid

Alfa Brera Colour combination

Standard on 2.2 JTS SV & 2.4 JTDm SV				Option on 2.2 JTS SV & 2.4 JTDm SV Standard on 3.2 JTS Q4 SV			Option on all Brera SV		
Trim	Alfatex®upholstery			Leather upholstery			Frau® Pieno Fiore Leather upholstery		
Seat Colour	Black/Grey	Blue/Tobacco	Red/Beige	Black/Grey	Blue/Tobacco	Red	Black	Blue/Tobacco	Red
Fascia colour	Black/Grey	Blue/Tobacco	Red/Beige	Black/Grey	Blue/Tobacco	Red/Beige	Black/Grey	Blue/Tobacco	Red/Beige
Carpet colour	Grey	Blue	Beige	Grey	Blue	Beige	Grey	Blue	Beige
Code	145	147	171	402	403	401	908	909	901
Solid									
601 Black		●	○	○	●	○	●	○	●
Special Paint (option 5B2)									
289 Alfa Red		●	—	—	●	—	—	—	—
METALLIC (option 210)									
203 Montecarlo Blue		●	○	—	●	○	—	●	○
565 Alfa Silver		●	●	●	●	●	●	●	●
583 Rubino Red		●	—	—	●	—	—	●	—
585 Touring Grey		●	●	●	●	●	●	●	●
586 Misano Blue		●	○	—	●	○	—	●	○
588 Gold		●	—	—	●	—	—	●	—
696 Diamante Grey		●	●	●	●	●	●	●	●
876 Carbonio Black		●	○	●	●	●	●	●	●

● = recommended ○ = available — = Not available

All information, descriptions and illustrations are given solely as a guide. Actual product specifications may differ due to manufacturing requirements. Alfa Romeo reserves the right to make any changes to its products it considers necessary. Some of the equipment described and/or photographed in this brochure is optional.

Alfa Romeo UK is a trading division of Fiat Auto (UK) Limited. 240 Bath Road, Slough, Berkshire, SL1 4DX.

Printed in Italy 04/07

All the information you need is on the internet at: www.alfaromeo.co.uk
or call **00800 2532 0000**

www.alfaromeo.co.uk



www.alfaromeo.co.uk

